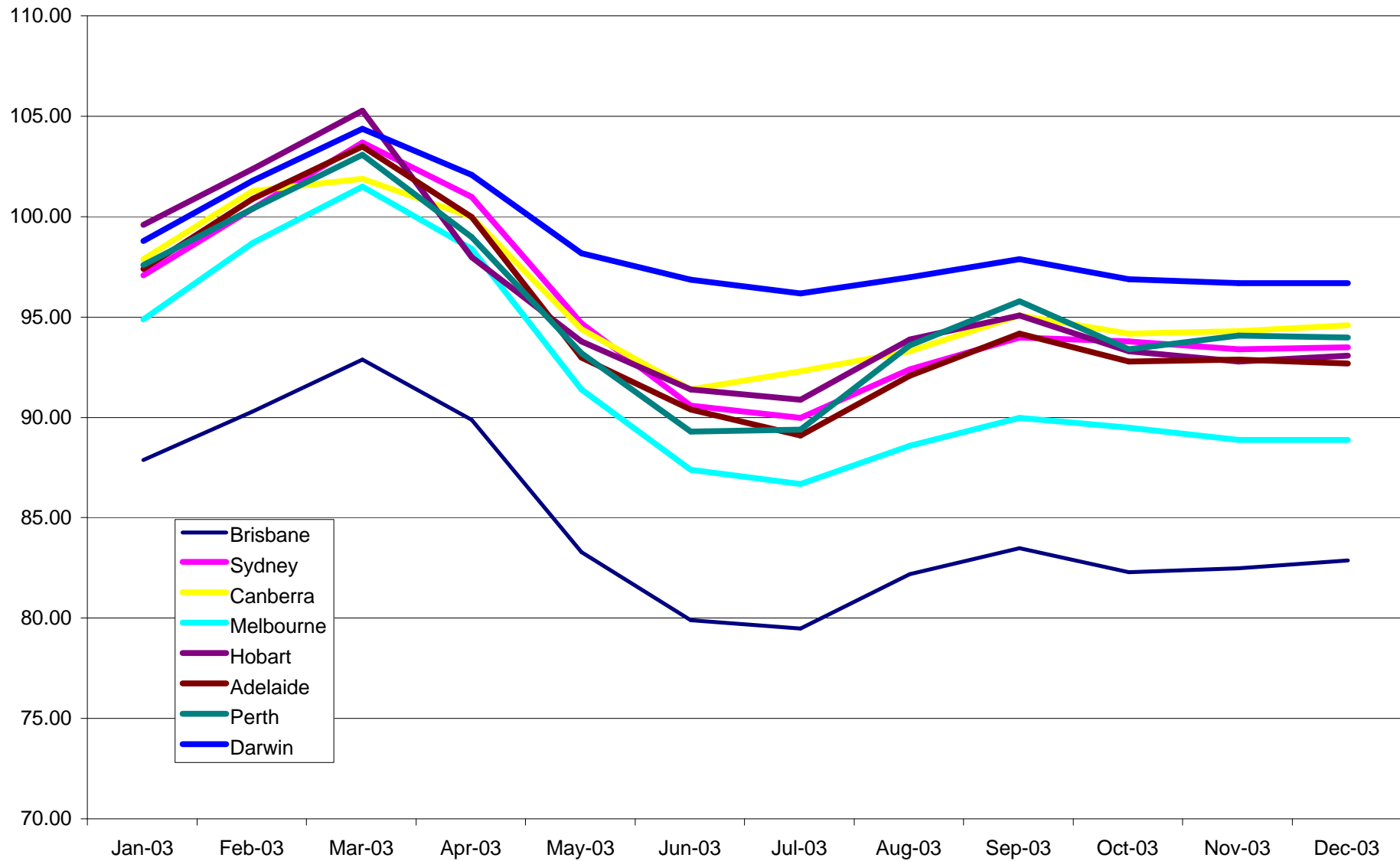


FUELtrac IPIP Report

Sample Only - Not Actual Prices

	Jan-03	Feb-03	Mar-03	Apr-03	May-03	Jun-03	Jul-03	Aug-03	Sep-03	Oct-03	Nov-03	Dec-03
IPIP - Retail (On-Road) Index												
<i>All Caps</i>												
Brisbane	87.80	90.20	92.80	89.80	83.20	79.80	79.40	82.10	83.40	82.20	82.40	82.80
Sydney	97.00	100.30	103.60	100.90	94.60	90.50	89.90	92.30	93.90	93.70	93.30	93.40
Canberra	97.80	101.20	101.80	99.90	94.30	91.30	92.20	93.20	95.00	94.10	94.20	94.50
Melbourne	94.80	98.60	101.40	98.30	91.30	87.30	86.60	88.50	89.90	89.40	88.80	88.80
Hobart	99.50	102.30	105.20	97.90	93.70	91.30	90.80	93.80	95.00	93.20	92.70	93.00
Adelaide	97.30	100.80	103.40	99.90	92.90	90.30	89.00	92.00	94.10	92.70	92.80	92.60
Perth	97.50	100.30	103.00	98.90	93.10	89.20	89.30	93.50	95.70	93.30	94.00	93.90
Darwin	98.70	101.70	104.30	102.00	98.10	96.77	96.10	96.90	97.80	96.80	96.60	96.60
Av.IPIP	96.30	99.43	101.94	98.45	92.65	89.56	89.16	91.54	93.10	91.93	91.85	91.95



Disclaimer : FuelTrac information is believed to be correct at time of printing. FuelTrac accepts no liability for omissions or other errors associated with the use or distribution of any information contained herein.